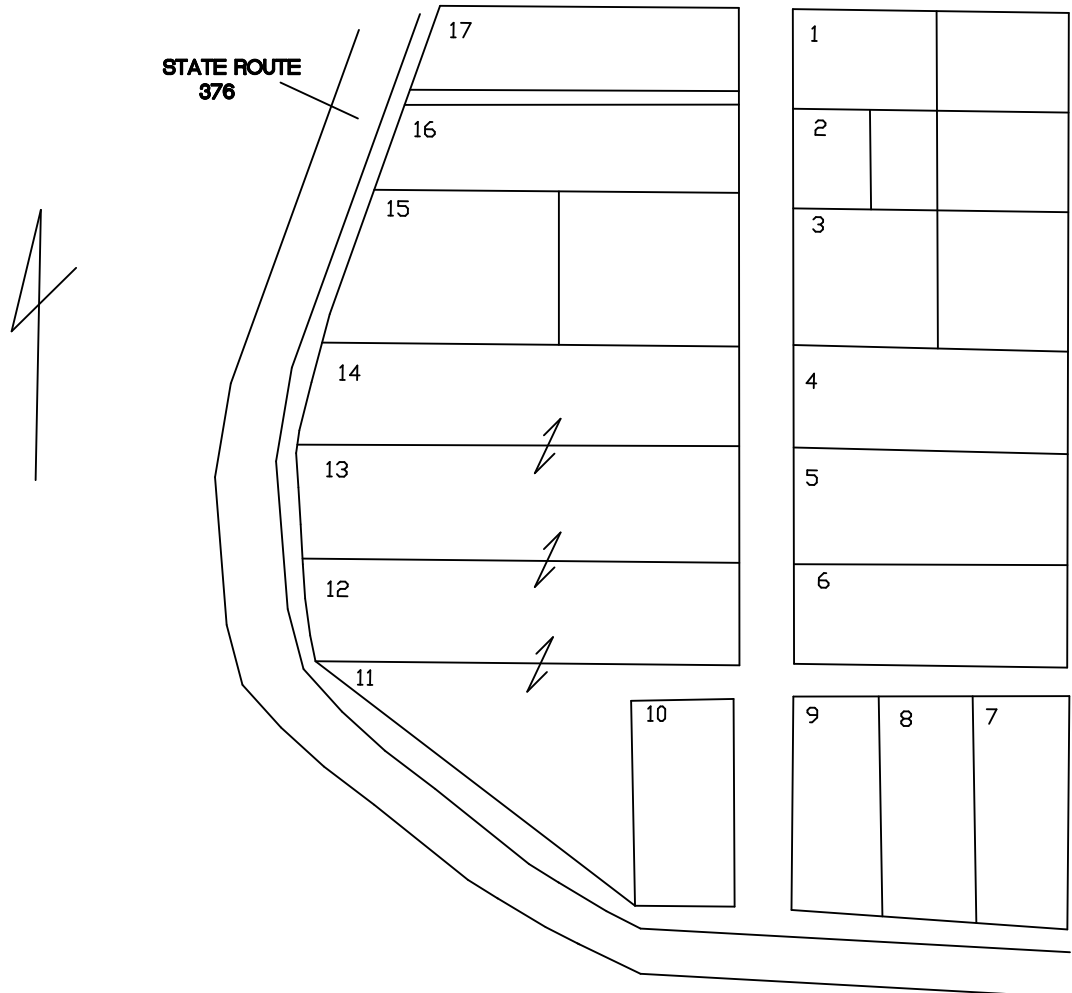


MCCONNELLSVILLE VILLAGE

BARKHURST'S ADDITION - 7

ALSO McNABB'S OUTLOT # 18

SCALE: 1" = 400 FEET



- | | | |
|----|---|--------------------------|
| 1 | Stephen Worthington | OR 162-64 |
| 2 | James A Roop etial
Stephen Worthington | OR 222-367
OR 162-64 |
| 3 | Jamed A Roop etial
Stephen Worthington | OR 222- 367
OR 162-64 |
| 4 | Angela & Jeffrey McInturf | OR 135-111 |
| 5 | Angela & Jeffrey McInturf | OR 135-111 |
| 6 | Mary Gessel | OR 165-252 |
| 7 | Mary Gessel | OR 165-252 |
| 8 | Mary Gessel | OR 165-252 |
| 9 | Mary Gessel | OR 165-252 |
| 10 | Mary Gessel | OR 165-252 |
| 11 | McConnellsville Village | OR 203-2631 |
| 12 | McConnellsville Village | OR 203-2631 |
| 13 | McConnellsville Village | OR 203-2631 |
| 14 | McConnellsville Village | OR 203-2631 |
| 15 | Angela & Jeffrey McInturf | OR 135-111 |
| 16 | James A Roop etial | OR 222-367 |
| 17 | James A Roop etial
Tony Potts | OR 222-367
OR 222-322 |