

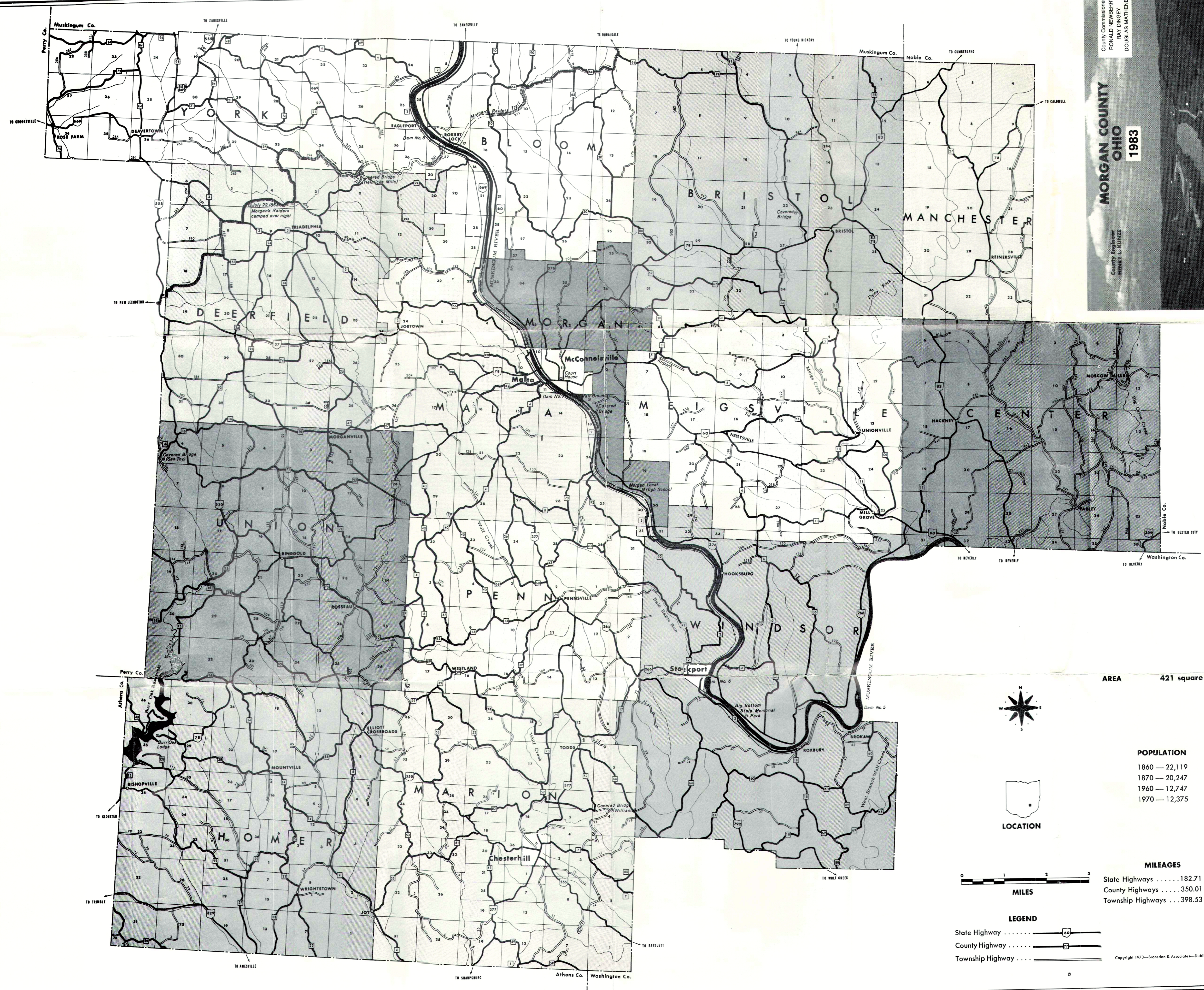
County Commissioners
 RONALD NEWBERRY
 RAY PINKEY
 DOUGLAS MATHENEY

MORGAN COUNTY OHIO

1983

County Engineer
 HENRY L. KUNZE

Scene of Muskingum River
 Courtesy of George Clement



AREA 421 square miles



LOCATION

POPULATION

1860	— 22,119
1870	— 20,247
1960	— 12,747
1970	— 12,375



MILES

MILEAGES

State Highways 182.71 miles
County Highways 350.01 miles
Township Highways 398.53 miles

LEGEND

State Highway
County Highway
Township Highway

Copyright 1973—Brandon & Associates—Dublin, Ohio